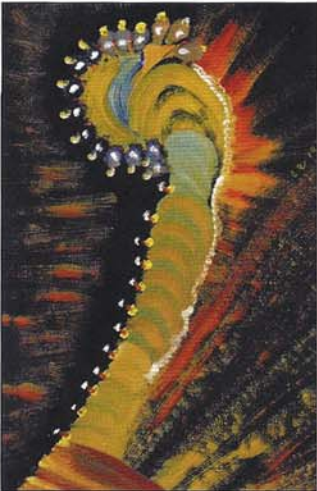


### MARKOVA

Until January 4 2009  
Mediumistic portraits and astral landscapes are shown in **Cecilie Marková: *Semblances of Souls*** at Olomouc Museum of Art, Museum of Modern Art, Denisova 47, 771 11 Olomouc, Czech Republic.  
t: +420 585 514111. [www.olmuart.cz](http://www.olmuart.cz)



Cecilie Marková

### OBJET TROUVÉ

January 29–March 7 2009  
Autobiographical and symbolic drawings by **Marilena Pelosi** are shown at **Galerie Objet Trouvé**.  
March 19–May 9 2009  
The artists of **La Tinaia** workshop.  
24 rue Charenton, 75012 Paris, France. t: +33 (0)1 53 33 01 70. [www.objet-trouve.com](http://www.objet-trouve.com)



Marilena Pelosi

### JEAN RUSTIN

Until January 17 2009  
To celebrate Jean Rustin's 80th birthday, **Galérie Polad-Hardouin** presents ***Une Vie de Peinture***, with a selection of works from his early abstract period to the most recent figurative paintings and drawings.  
86 rue Quincampoix, 75003 Paris, France. t: +33 (0)1 42 71 05 29. [www.polad-hardouin.com](http://www.polad-hardouin.com)



Jean Rustin

### FRED DEUX

Until March 8 2009  
The retrospective exhibition of works by **Fred Deux, Cécile Reims** and pieces from their collection continues at **Halle Saint Pierre**, 2 rue Ronsard, 75018 Paris, France. t: +33 (0)1 42 58 72 89. [www.hallesaintpierre.org](http://www.hallesaintpierre.org)



Fred Deux

### ART BRUT

Until January 25 2009  
Art Brut from Japan continues. February 6–September 27 2009  
**Art Brut fibourgeois** follows at the **Collection de l'Art Brut**, Avenue des Bergières 11, 1004 Lausanne, Switzerland. t: +41 (0)21 315 25 70. [www.artbrut.ch](http://www.artbrut.ch)



Gaston Savoy

### WOMEN ARTISTS

January 25–April 12 2009  
**Women as Outsider Artists** features **Martha Grunenwaldt, Ody Saban, Anne Grgich** and others at **Frauen Museum Wiesbaden**, Wörthstr. 5, 65185 Wiesbaden, Germany. t: +49 (0)611 3081763. [www.frauenmuseum-wiesbaden.de](http://www.frauenmuseum-wiesbaden.de)



Martha Grunenwaldt

### LOSS OF CONTROL

Until January 25 2009  
Curated by **Carine Fol** (director of Art en Marge) and **Jan Hoet** (founding director of MARTa Herford) **Loss of Control: Crossing the boundaries to art from Félicien Rops to the present** explores the permanent exchange between art and life, madness and genius, death and sexuality. The show includes a variety of works by Outsider and Art Brut artists.  
**MARTa Herford**, Goebenstraße 4–10, 32052 Herford, Germany. t: +49 (0)5221 99 44 300. [www.martaherford.de](http://www.martaherford.de)



Johann Hauser



Laure Pigeon

### EXHIBITIONS AT PRINZHORN

Until September 14 2009  
**Artists off the Rails** exhibits originally academic artists such as **August Richter, Karlmax Würtenberger** and **Hans Otto Schönleber**.  
Until February 6 2009  
Works by inmates of the Waldau institution from the collection of psychiatrist **Walter Morgenthaler** can be seen for the first time in **The Morgenthaler Collection: Wölflü and other Artists from the Asylum Waldau/Bern**.  
**Sammlung Prinzhorn**, Voßstraße 2, D-69115 Heidelberg, Germany. t: +49 (0)6221 564725. [www.prinzhorn.uni-de](http://www.prinzhorn.uni-de)



Adolf Wölflü