

CANADA

July 10–August 19

On the Horizon includes visionary drawings and paintings by Donna Balma and others. Sunshine Coast Arts Centre, 5714 Medusa Street, Sechelt, BC V0N 3A0. t: 604 885 5412.

Donna Balma



FRANCE

May 31–July 13

Histoire(s) Naturelle(s) shows Pétra Werlé's delicate, fantastical creatures. Galerie Béatrice Soulié, 21 rue Guénégaud, 75006 Paris. t: +33 (0)1 43 54 57 01. www.galerie-beatrice-soulie.com

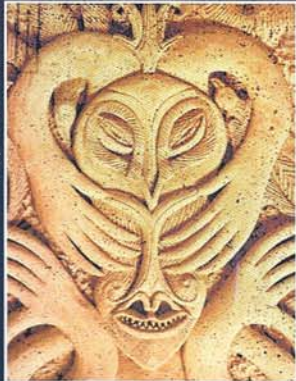
Pétra Werlé



Until June 3

Objet Trouvé presents rare cork reliefs and sculpture in Joaquim Vicens Gironella: *l'Esprit du Liège*. 24 rue de Charenton, 75012 Paris. t: +33 (0)1 53 33 01 70. www.objet-trouve.com

Joaquim Vicens Gironella



BRITAIN CREATIVITY CENTRE

August 9–September 14

ArtJam: Hidden Landscapes is the annual exhibition of The Creativity Centre. Over 20 artists have participated in workshops and are involved in planning and curating the exhibition. Novas Gallery Camden aims to change lives through arts, enterprise and community support. 73 Parkway, Camden Town, London, NW1 7PP. t: 020 7267 5641.

e: richard.seymour@novas.org



PRISONER'S INSIDER ART

July 19–August 29

Arthur Koestler compared prison life to a 'death of the spirit' and founded the Koestler Trust in 1962, with an annual award scheme for prisoners in the UK. Over 2000 art and design submissions from prisoners were made last year. A panel including Grayson Perry will select works to be presented at the ICA. *Insider Art: Art from the Koestler Awards Scheme*. ICA, The Mall, London, SW1Y 5AH. t: 020 7766 1404.

www.ica.org.uk



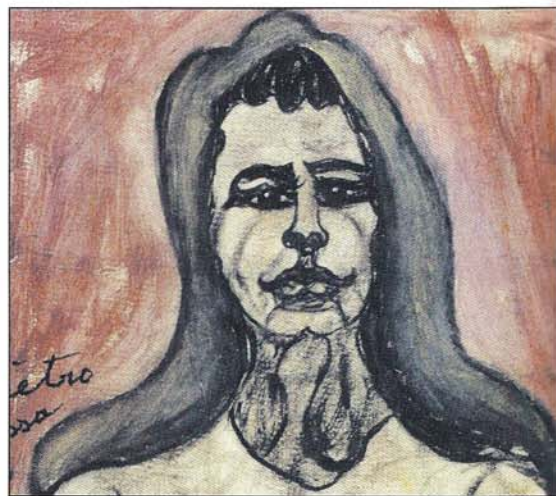
CROATIA ART WITHOUT FRONTIERS

July 12–August 12

The Croatian Museum of Naive Art presents *Art Without Frontiers: Foreign Masters from the Collection of the Croatian Museum of Naive Art* which exhibits works by 17 classic artists, including Pietro Ghizzardi, Pavel Leonov, Nikifor and Willem van Genk. Many works are shown for the first time and others have not been seen for many years.

Ulica sv. Cirila i Metoda 3, 10000 Zagreb, Republika Hrvatska. www.hmnu.org

t: +385 (0)1 48 51 911.



FINLAND ITE EXHIBITIONS

Two major shows take place in Finland:

June 8–September 30

Forest paths at Kierikki Stone-Age Centre on Finland's west coast are populated by animals and figures in *ITE by the River: Ostrobothnian ITE Art*, Pakkalantie 447, 91200 Yli-Ii. www.kierikki.fi/ajankohtaista/tapahtumat.

June 3–September 16

ITE in the backwoods shows new ITE art from the Kainuu district, at Kajaani Art Museum, unique in its humour, its sense of community and its interest in current affairs. No one is spared: Former president Kekkonen does gymnastics and Christ is created from twigs. Linnankatu 14, 87100 Kajaani. www.kajaani.fi/taidemuseo.

